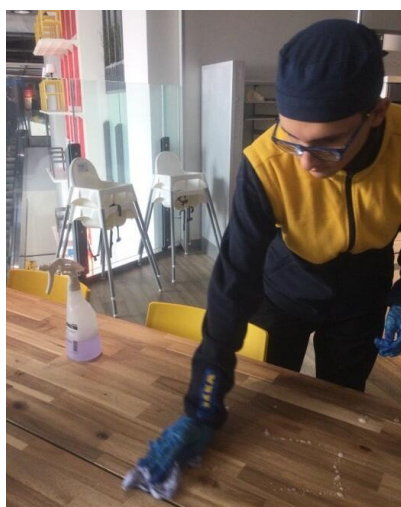
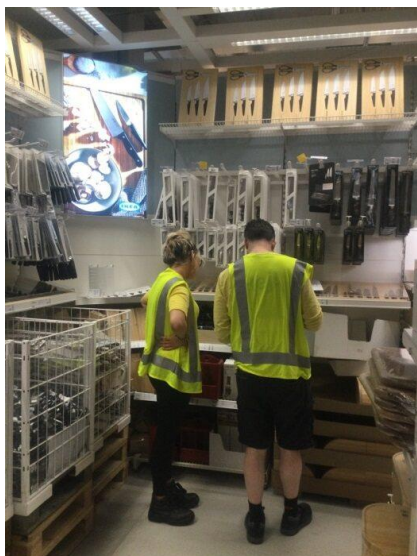


Pathway to Employment

Work Experience

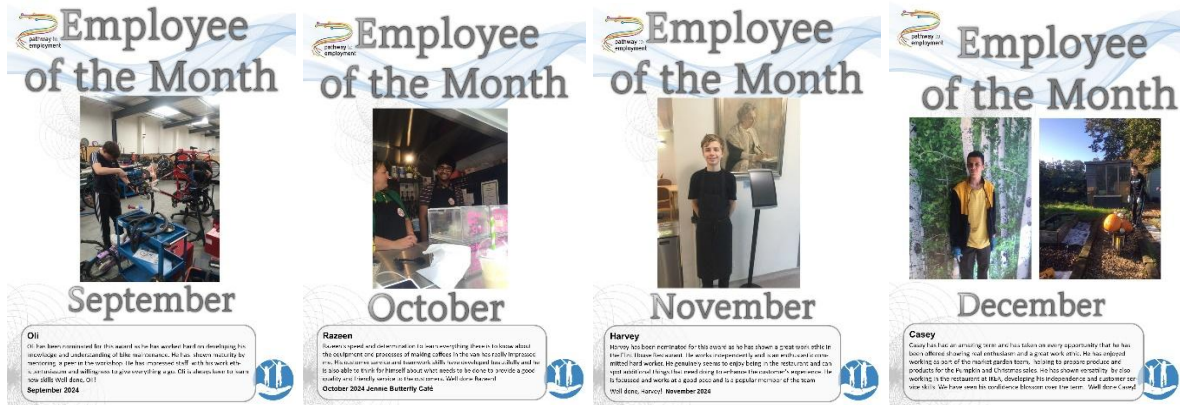
Since September 2024, 38 students have had work-based placements at 11 different venues totalling over 600 hours between them. This term we have had placements at Butterfly Café, IKEA, Flint House dining room, Flint House polytunnel, Berkshire Music Trust, Brookfields Market Garden, Newbury Community Furniture Project and Laithwaites as well as new placements at Englefield Tea rooms, Elixir Beauty salon and The Ridgeline Trust (who help people access the benefits of horticultural therapy in their beautiful, accessible garden). Learning from employers first-hand about work, employment and the skills that are valued in the workplace is invaluable. It allows the students to start to build on their employability and communication skills and self-confidence. This provides them with a meaningful insight into the types of jobs that are available.





Employee of the Month Awards

The following students have shown real enthusiasm during their placements and have been awarded 'Employee of the Month' certificates by our Pathway to Employment team.



Christmas Sales

This year we attended Christmas Fairs at Laithwaites, Visa and Brookfields selling Bulb Lasagne planters, succulents, wreaths and chutneys made by the students in the Brookfields Market Garden Enterprise.



Newbury College Expo

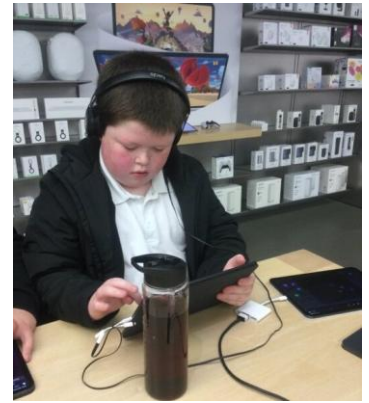
Students attended an interactive Careers Fair at Newbury College this term having the opportunity to engage with professionals and question up to 75 local employers and Pathway Employers who are actively recruiting young people in the area.

Employee Encounters

This term we have had encounters with employers both here at school and at the employers' workplaces including:-

Apple Store

Students also visited the Apple Store to learn how to use Apple apps to produce a guidebook on locations around the world. They each made a presentation.



WILLIAMS RACING

Some secondary students visited the Williams Experience Centre in Grove Oxfordshire. The students had a guided tour of the Heritage Museum learning about the evolution of F1 sports cars and took part in interactive experiments.

They were then invited to the Esports Simulator Lounge where they experienced the thrill of virtual racing, sitting behind the wheel of the simulators, which the students seemed to really enjoy!



Speakers for Schools

Willmott Dixon delivered some workshops looking at job opportunities focussing on the hobbies and interests of young people. The students enjoyed a practical straws and connectors activity.



The

students then visited the working site, meeting various trades' people and having the opportunity to ask them many interesting questions

Department for Work and Pensions (DWP)

We have been lucky to have a representative from the DWP come into school to deliver various workshops. The students have looked at skills and qualities, career pathways, supported internships, job websites, employer expectations, different types of interviews, budgeting/payslips and CVs.

Watermill Theatre

'Create a Space' is a course designed to help young people develop transferrable skills, grow their confidence to develop communication skills, teamwork and learn how to show up as the best version of themselves. This is achieved with a series of practical drama-based workshops



Visa staff used some of their volunteering hours to do some maintenance work at our allotment site. Tasks included building a fence, constructing further pathways and some serious weeding and digging!



Their support is invaluable as it helps us to continue to improve accessibility for our students. Thank you to the Visa volunteers!



The

Museum of English Rural Life

The students had an opportunity to enrich their learning by experiencing a farming workshop in a welcoming and engaging museum setting looking at the unique collections.

It just remains for us to thank you for your continued support, and we look forward to working with you all again next year. If you would like any further information or have any innovative ideas on how we could work together, we would love to hear from you.

jgrant@brookfields.w-berks.sch.uk or lbellman@brookfields.w-berks.sch.uk

Julie Grant and Lucy Bellman, Pathway to Employment Team